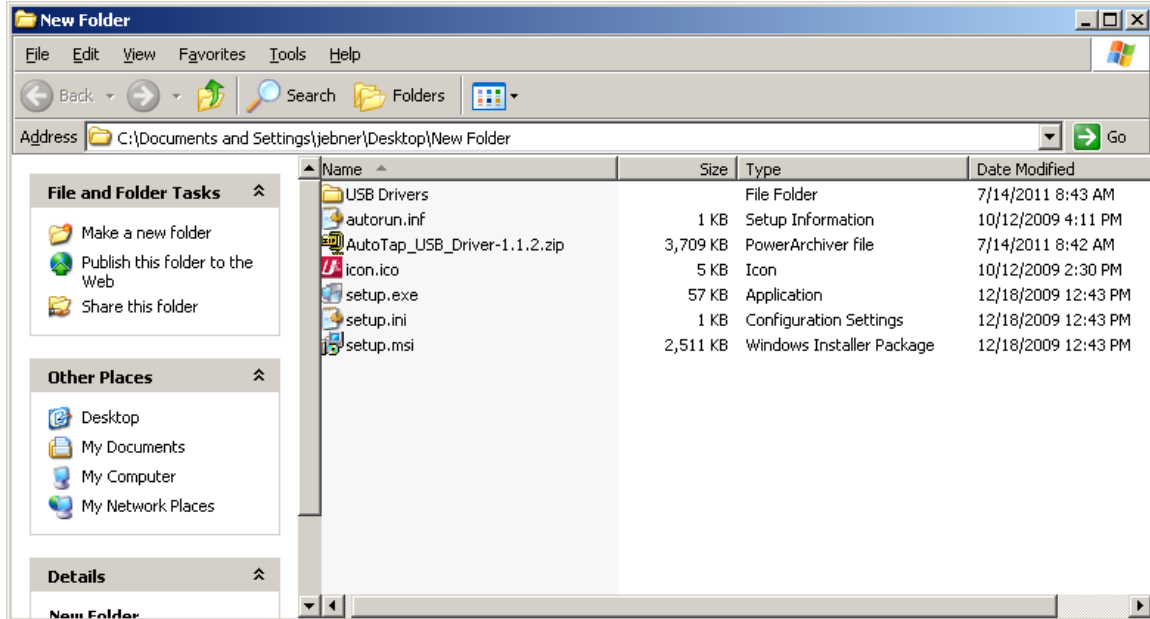


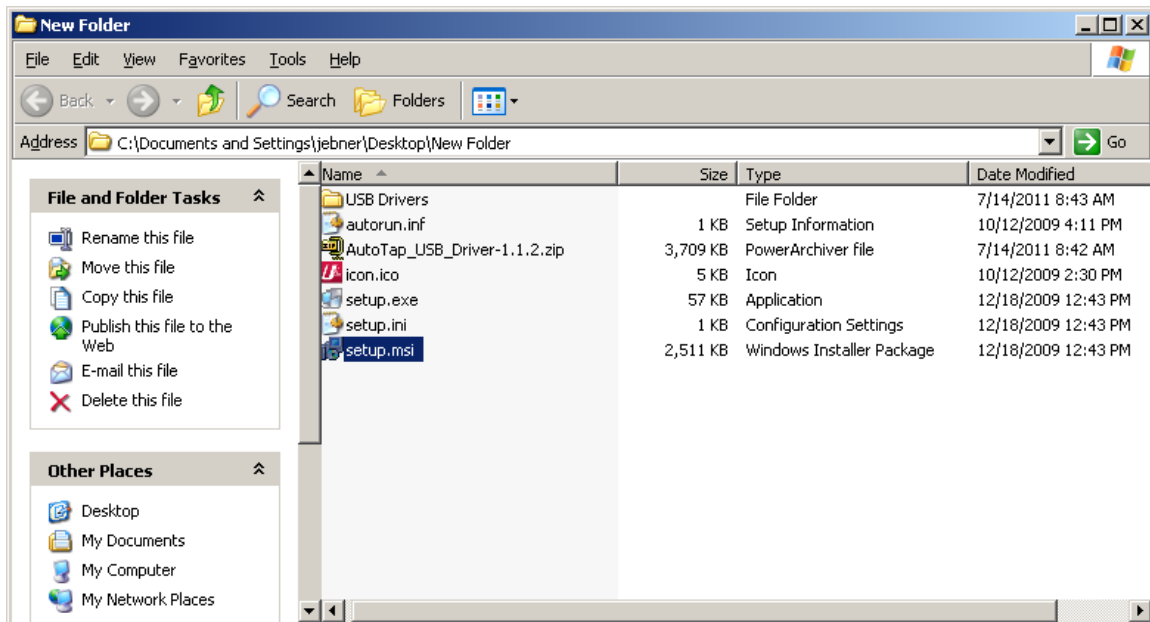
## ATUSB Driver and Software Installation and Registration

### ATUSB Driver Installation

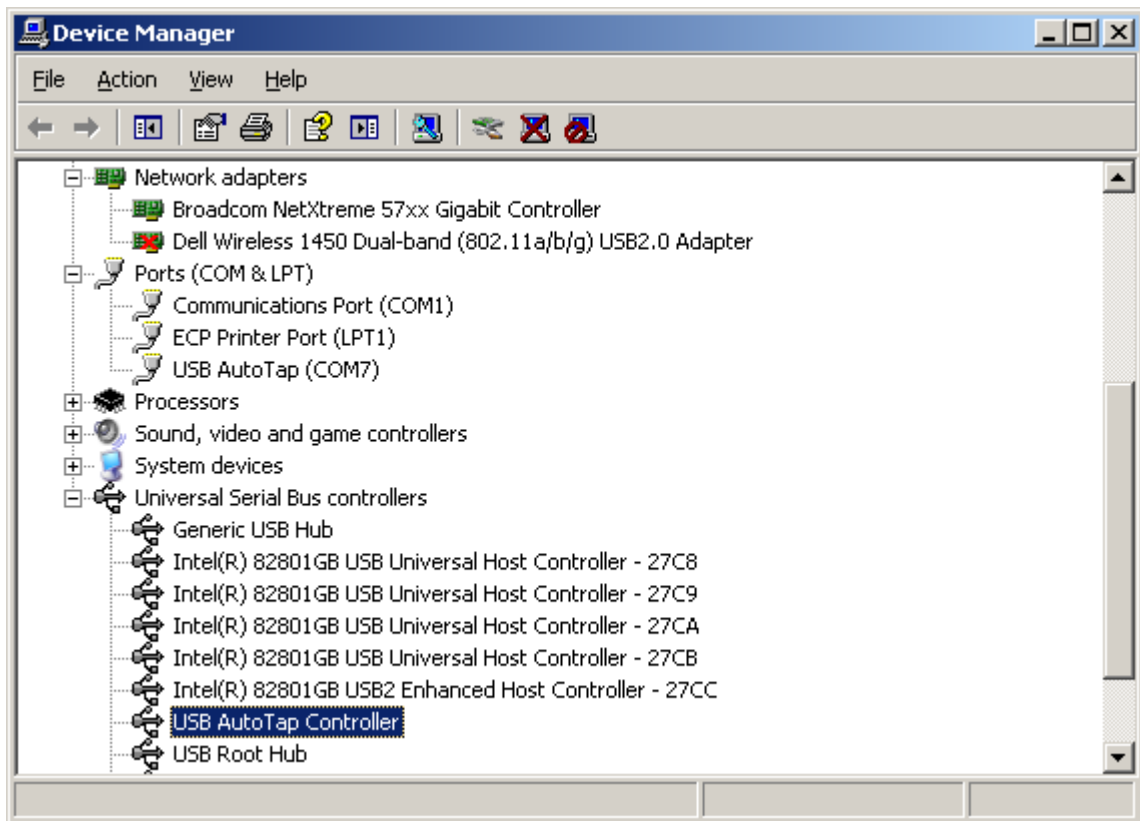
Create a new folder on your desktop, then visit our web site at: <http://www.autotap.com/support.asp> and download the ATUSB drivers to that new folder. Open the folder and extract the zip file to that folder. You should then see 6 files listed, including the .zip file.



Make sure your AutoTap hardware unit is NOT connected to your computer USB port, then double click on the setup.msi file. **The drivers will show up as Ulinx USB drivers during installation.** For Windows Vista and Windows 7, you will need to click on the blue and yellow shield that appears in the task bar, then click on Allow. You may need to click on Allow more than once for Windows 7 to complete the driver installation.



After the drivers have completed the installation process, connect the AutoTap hardware to a USB port and then go into Device Manager to confirm that the AutoTap is listed under both the Universal Serial Bus Controllers, and Ports. (Some computers will display this as Other Devices)



\*\*\*For AutoTap Diagnostic (V3.1 or V2.05 software), your AutoTap must be assigned between com 1 and 16. I highly recommend avoiding com 3.

The Express DIY software is not limited to com 1-16, and will assign and operate on any port number.

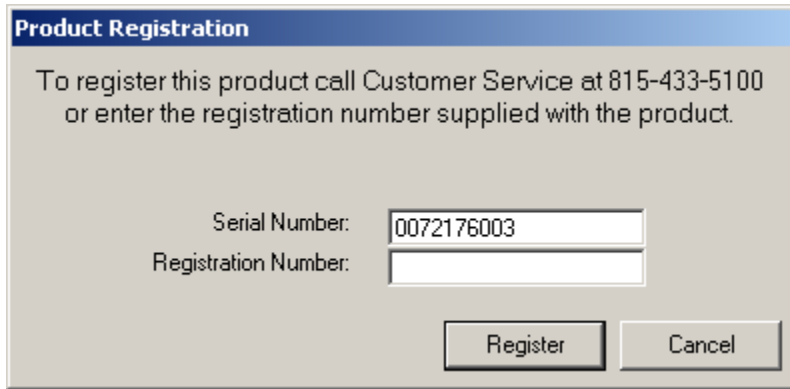
### Software Installation

V3.1 and V2.05 Diagnostic software and the Express DIY software can be downloaded and installed directly from the AutoTap web site at: <http://www.autotap.com/support.asp>

\*\*\*\*Only install the version(s) of AutoTap software that you are registered for.

## Software Registration

To register V3.1 or V2.05 Diagnostic software, connect the AutoTap to your computer and double click on the AutoTap V3.1 (or V2.05) icon. The software should detect the hardware and display the serial number of your hardware unit.



The dialog box has a blue title bar with the text "Product Registration". Below the title bar, there is a message: "To register this product call Customer Service at 815-433-5100 or enter the registration number supplied with the product." Below the message, there are two input fields. The first is labeled "Serial Number:" and contains the text "0072176003". The second is labeled "Registration Number:" and is empty. At the bottom right, there are two buttons: "Register" and "Cancel".

Enter the registration key you were provided for the Diagnostic software, then click on Register. The software should then continue and connect with the vehicle.

To register the Express DIY software, connect the AutoTap hardware to your computer, and also to your vehicle. Double click on the AutoTap Express DIY icon. When the software opens, click on the Connect button in the lower left corner of the software. The software should detect the hardware and display the serial number of your hardware unit.



The dialog box has a title bar with the text "Register" and a close button (X). Below the title bar, there are two labels and one input field. The first label is "Device Serial Number" and the value next to it is "0072176003". The second label is "Enter Registration Key" and the input field is empty. At the bottom, there are two buttons: "Register" and "Cancel".

Enter the registration key you were provided for the Express DIY software, then click on Register. **The Express DIY registration is case sensitive.** After inserting the correct registration, you should see this screen:



The dialog box has a title bar with the text "Register" and a close button (X). Below the title bar, there is a message: "Registration is Successful." At the bottom, there is one button: "OK".

Click OK, and the software should then continue and connect with the vehicle.

